

**DLX1 Antibody (monoclonal) (M01)****Mouse monoclonal antibody raised against a partial recombinant DLX1.****Catalog # AT1774a****Specification**

---

**DLX1 Antibody (monoclonal) (M01) - Product Information**

Application	WB, IF, IP, E
Primary Accession	<a href="#">P56177</a>
Other Accession	<a href="#">NM_178120</a>
Reactivity	Human
Host	mouse
Clonality	Monoclonal
Isotype	IgG2a Kappa
Calculated MW	27320

**DLX1 Antibody (monoclonal) (M01) - Additional Information****Gene ID** 1745**Other Names**

Homeobox protein DLX-1, DLX1

**Target/Specificity**

DLX1 (NP\_835221, 152 a.a. ~ 255 a.a) partial recombinant protein with GST tag. MW of the GST tag alone is 26 KDa.

**Dilution**

WB~~1:500~1000

IF~~1:50~200

IP~~N/A

E~~N/A

**Format**

Clear, colorless solution in phosphate buffered saline, pH 7.2 .

**Storage**

Store at -20°C or lower. Aliquot to avoid repeated freezing and thawing.

**Precautions**

DLX1 Antibody (monoclonal) (M01) is for research use only and not for use in diagnostic or therapeutic procedures.

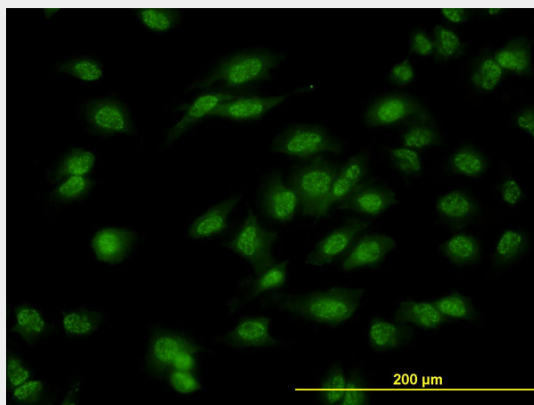
**DLX1 Antibody (monoclonal) (M01) - Protocols**

Provided below are standard protocols that you may find useful for product applications.

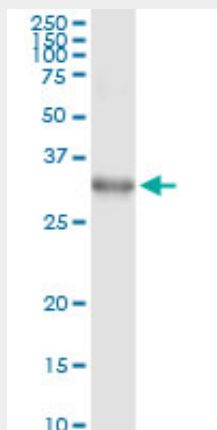
- [Western Blot](#)

- [Blocking Peptides](#)
- [Dot Blot](#)
- [Immunohistochemistry](#)
- [Immunofluorescence](#)
- [Immunoprecipitation](#)
- [Flow Cytometry](#)
- [Cell Culture](#)

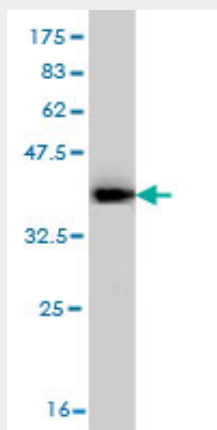
## DLX1 Antibody (monoclonal) (M01) - Images



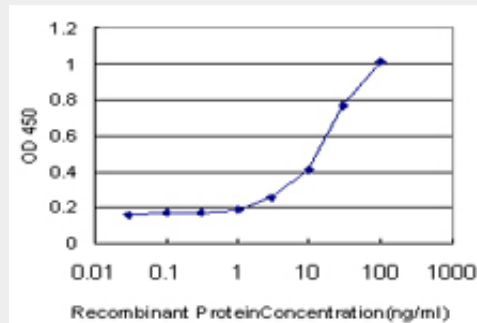
Immunofluorescence of monoclonal antibody to DLX1 on HeLa cell. [antibody concentration 10 ug/ml]



Immunoprecipitation of DLX1 transfected lysate using anti-DLX1 monoclonal antibody and Protein A Magnetic Bead ([U0007](#)), and immunoblotted with DLX1 MaxPab rabbit polyclonal antibody.



Antibody Reactive Against Recombinant Protein. Western Blot detection against Immunogen (37.55 KDa) .



Detection limit for recombinant GST tagged DLX1 is approximately 1ng/ml as a capture antibody.

### **DLX1 Antibody (monoclonal) (M01) - Background**

This gene encodes a member of a homeobox transcription factor gene family similar to the *Drosophila* distal-less gene. The encoded protein is localized to the nucleus where it may function as a transcriptional regulator of signals from multiple TGF- $\beta$  superfamily members. The encoded protein may play a role in the control of craniofacial patterning and the differentiation and survival of inhibitory neurons in the forebrain. This gene is located in a tail-to-tail configuration with another member of the family on the long arm of chromosome 2. Alternatively spliced transcript variants encoding different isoforms have been described.

### **DLX1 Antibody (monoclonal) (M01) - References**

1. Upregulation of homeodomain genes, DLX1/2, by FLT3 signaling. Starkova J, Gadgil S, Qiu YH, Zhang N, Hermanova I, Kornblau SM, Drabkin HA. *Haematologica*. 2011 Feb 28. [Epub ahead of print]